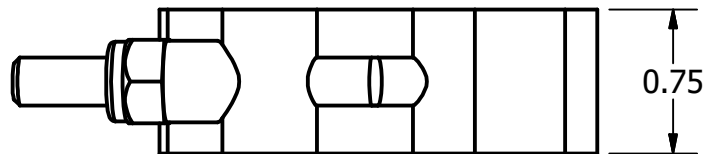


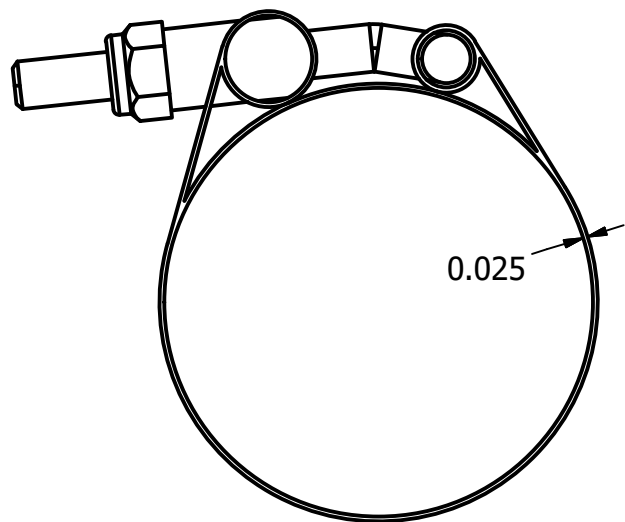
2



1



B



Note:

Matl: 300 Series Stainless Steel

Clamp Min = Ø2.17

Clamp Max = Ø2.48

Torque to 75 in-lbs for assembly.

Max Torque = 75 in-lbs.

Model for representation purposes only.



B

A



A

THIS DRAWING AND ALL INFORMATION CONTAINED THEREON ARE THE EXCLUSIVE PROPERTY OF BANJO CORPORATION.

UNLESS SPECIFICALLY NOTED, THIS DRAWING AND ITEMS SHOWN ON THIS DRAWING ARE SUBJECT TO CHANGE AT ANY TIME.

BANJO CORPORATION

150 BANJO DRIVE, CRAWFORDSVILLE, IN 47933
WEB SITE: WWW.BANJOCORP.COM
E-MAIL: BANJOSALES@IDEXCORP.COM

DESCRIPTION

2 1/16" - 2 3/8" T-Bolt Clamp

PART NUMBER

TC206

2



1